

Q Class 541 Overhaul Update

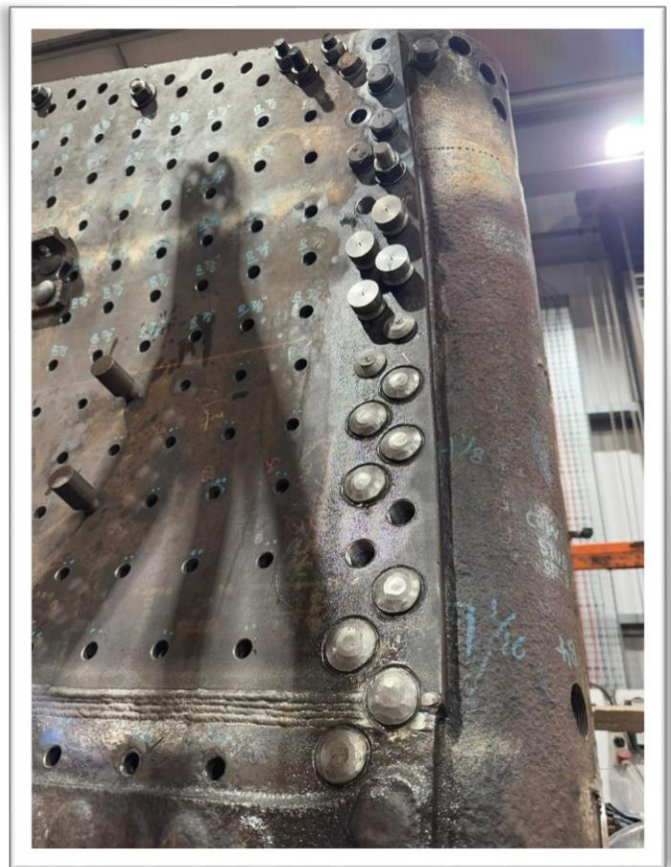
By Chris Hunford and Steve Pilcher, Maunsell Locomotive Society

The overhaul of the Q took a significant step forward last week with the completion of the new tender tank. Our friends and colleagues at the 4253 Locomotive Company, based at Rolvenden Locomotive Works, have done a superb job manufacturing a new tank and including all the salvageable parts from the old tank. There's just a few minor snagging items to complete now before the tank can be transported back to Sheffield Park later this month.

Meanwhile at Sheffield Park work has continued on the tender chassis where the first coats of paint are beginning to be applied. See photo of the rear buffer beam. A new pressing that is required to enable work to complete the front dragbox has arrived. MLS volunteers have been cleaning and priming various sections of the locos boiler cladding that are present at Sheffield Park.

At Leaky Finders work has commenced fitting the patch screws to the lap joints between the new outer wrapper and existing backhead. See attached photo. You'll also notice from the picture the new stay holes, all of which have been reamed and de-burred, ready to make a start on tapping the threads. Manufacture of the new stays is being done in-house and they are being fitted as progress is made along the new plate work.

Work on the chassis has centred around tidying up some of the smaller items and preparing for the optical alignment work which should, by the time you read this, be well advanced. The purpose of this is to take measurements and align the whole chassis before the frame insert work starts. We'll cover this in more detail in the next issue of *The Bluebell Times*.



Top: View of outer wrapper of 541 firebox, with patch screws being fitted.
Photo: courtesy Leaky Finders

Bottom: Fitting door bar to new 541 tender tank.
Photo: 4253 Group



Left: Rear buffer beam and new dragbox of tender chassis, at Sheffield Park.

Photo :Steve Pilcher

Below: Work on cleaning and painting loco boiler cladding.

Photo: Steve Pilcher

